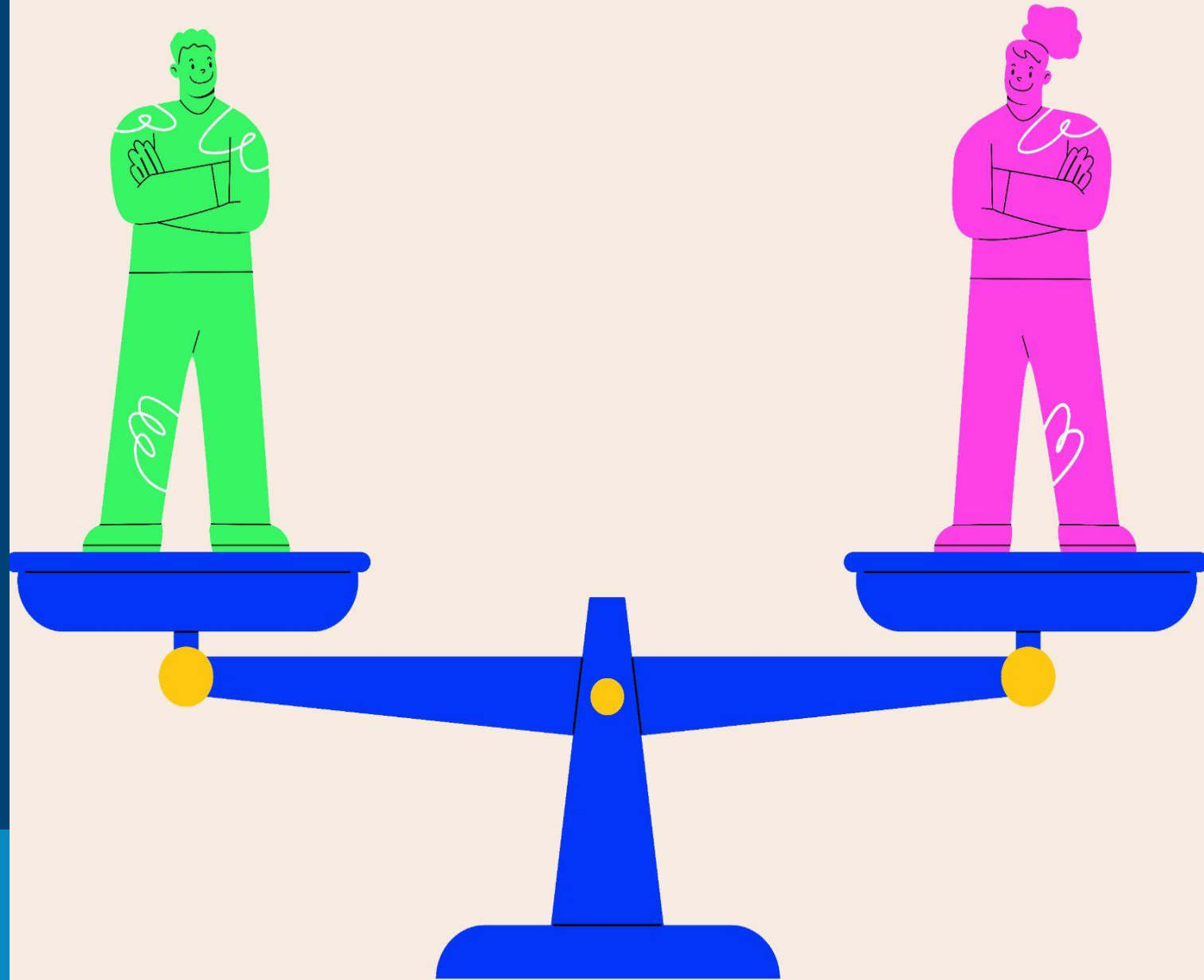




Similarities and Differences

Grade 1, Lesson 2

intrepidmuseum.org



What is a *community*?

THIS

OR



THAT



DOGS

OR

CATS





SUMMER

OR



WINTER





CANDY **OR** 
 **ICE CREAM**

BOOKS

OR



MOVIES

VANILLA OR 
 **CHOCOLATE**

DARK HAIR

OR



LIGHT HAIR



6 YEARS OLD

OR



7 YEARS OLD

ONLY CHILD

OR



HAVE SIBLINGS

FIRST GRADE

OR

SECOND GRADE





INTREPID MUSEUM

intrepidmuseum.org



Leaders and Decision Makers

Grade 1, Lesson 3

intrepidmuseum.org



What is a *leader*?

A city is led by a mayor.

A state is led by a governor.

A country is led by a president.



INTREPID MUSEUM

intrepidmuseum.org



The Fabric of Community

Grade 1, Lesson 4

intrepidmuseum.org



What makes me special?

What is a quilt?



All images are from the Library of Congress Lands' End All-American Quilt Collection



INTREPID MUSEUM

intrepidmuseum.org